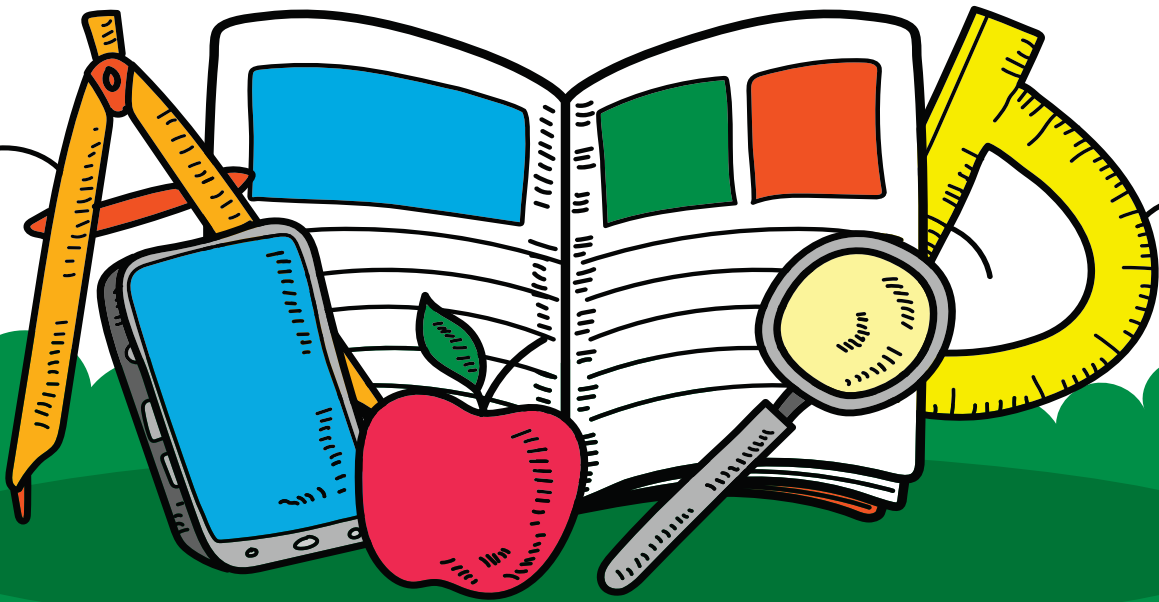




TULSI PUBLIC SEN. SEC. SCHOOL
(AFFILIATED TO CBSE)

SYLLABUS BOOKLET



SESSION 2023-24

NAME.....

CLASS..... ROLL NO.

SECTION YEAR.....



TENTATIVE PARENT TEACHER MEETING SCHEDULE

| Sr. No | Event | Date | Day |
|-----------------|------------------|---------------------------|----------------------------|
| 1 st | PTM/ Orientation | 13 th May | Saturday |
| 2 nd | PTM | 8 th July | Saturday |
| 3 rd | PTM | 12 th August | Saturday |
| 4 th | PTM | 7 th October | Saturday |
| 5 th | PTM | 30 th December | Saturday |
| 6 th | PTM | 10 th February | Saturday |
| 7 th | PTM | March | As mentioned in Date Sheet |

PARENT TEACHER MEETING TIME SLOT

To allow adequate time for all parents at the PTM, students have been allotted roll number wise time slots. Parents are requested to visit according to the time slots given below to avoid inconvenience.

| Roll No | Summer Timing | Winter Timing |
|----------------|--------------------------|--------------------------|
| 1 to 8 | 9.00 a.m. to 9.30 a.m. | 9.30 a.m. to 10.00 a.m. |
| 9 to 16 | 9.30 a.m. to 10.00 a.m. | 10.00 a.m. to 10.30 a.m. |
| 17 to 24 | 10.00 a.m. to 10.30 a.m. | 10.30 a.m. to 11.00 a.m. |
| 25 to 32 | 10.30 a.m. to 11.00 a.m. | 11.00 a.m. to 11.30 a.m. |
| 33 to 40 | 11.00 a.m. to 11.30 a.m. | 11.30 a.m. to 12.00 noon |

Common Time- 11:30 a.m. to 12:00 noon (In summers)

Common Time- 12:00 noon to 12:30 p.m. (In Winters)

(for parents whose more than one child is studying in the school and there is a clash in the time of both)

EXAM SCHEDULE FOR CLASSES III TO VIII

| Month | Examination |
|-----------|------------------------------------|
| May | Periodic Test- 1 (UT-1) |
| July | Sub Enrichment Activity- 1(SEA-1) |
| September | First Term Exam |
| December | Periodic Test – 2 (UT-2) |
| January | Sub Enrichment Activity – 2(SEA-2) |
| February | Second Term Exam |

Note: The date of exams is tentative. If needed, they are subject to change.

Note:

- There will be no written exam after or before the given scheduled date sheet.
- Parents are requested to keep a check on notebooks and bag. They are requested to inform the school if the note books of their ward are unchecked or incomplete.

8 points Grading Scale

| Marks | Grade |
|------------|-----------------------|
| 91- 100 | A1 |
| 81- 90 | A2 |
| 71- 80 | B1 |
| 61- 70 | B2 |
| 51- 60 | C1 |
| 41- 50 | C2 |
| 33- 40 | D |
| 32 & Below | E (Needs Improvement) |

VALUE OF THE MONTH

| | |
|-----------|-----------------|
| April | Confidence |
| May | Positivity |
| June | Self Discipline |
| July | Etiquettes |
| August | Protection |
| September | Curiosity |
| October | Excellence |
| November | Smartness |
| December | Creativity |
| January | Planning |
| February | Enthusiasm |
| March | Ambition |

TABLES

| | |
|----------|------------|
| April | 2 to 5 |
| May | 6 to 9 |
| July | 10, 11 |
| August | 12, 13 |
| October | 14, 15 |
| November | 16, 17 |
| December | 18, 19 |
| January | 20 + |
| February | 2 to 20 |
| | |
| | |

DISPLAY BOARD

Notice- Material on display board shall be put up latest by 10th of the month.

(Use A4/ A3 Size sheets only)

COMPULSORY INFORMATION ON BOARDS

| | | |
|--|-------------------|-------------------------------------|
| ❖ Classroom Norms | ◆ April | Earth Day + Baisakhi |
| ❖ Star charts | ◆ May | Mother's Day |
| ❖ Resource managers charts | ◆ July | Van Mahotsav/ food and Nutrition |
| ❖ Birthday charts | ◆ August | Independence Day/ Divine India |
| ❖ Time Table with subject teacher names | ◆ October | Technology and Innovation |
| ❖ Thought of the week | ◆ November | Children's Day and Festivals |
| ❖ Value of the month | ◆ December | Christmas/ New Year/ Heritage |
| ❖ Table of the month | ◆ January | Pride of India- Our constitution |
| | ◆ February | Family Unity |

ENGLISH SYLLABUS (2023-2024) : Class: 7th

| * PERIODIC TEST -1 (UT) | | |
|---|------------------|-----------|
| ❖ Section 1 (Reading) | BLUE PRINT UT-1 | MARKS |
| Practice of Comprehension Passages (1 to 5) from the book 'Comprehension and Composition ' | Reading | 8 |
| | Recitation | 10 |
| | Grammar | 10 |
| ❖ Section 2 (Writing) | Literature | 12 |
| Paragraphs Describing Routines in Simple Present Tense eg My Daily Routine /My Grandfather's Daily Routine / My Sister's Daily Routine etc | Total | 40 |
| Letters (Informal) | | |
| Letters of Request eg Increase in monthly allowance Increase in Hostel Charges /Increase in Mess Charges etc | | |
| ❖ Section 3 (Grammar) | | |
| Tenses (Tense -Table) Ch-11 Present Tense Ch-1 Revision of Sentence, Phrase,Part of a Sentence Ch-2 Kinds of Sentences and Tag Questions Ch-3 Nouns | | |
| ❖ Section 4 (Literature) | | |
| Ch-3 Why I Write Poem If | | |
| * SEA -1 (ORAL EXAMS) | | |
| ❖ Reading skill | BLUE PRINT SEA-1 | MARKS |
| Reading from the following chapters | Reading | 4 |
| Ch-3 Why I Write | Recitation | 4 |
| Ch-5 The Story of Bitaram | Dictation | 4 |
| | ASL | |
| | Listening | 4 |
| ❖ Recitation | Speaking | 4 |
| Poem If | Total | 20 |
| ❖ Dictation | | |
| Dictation from the following chapters Ch-3 Why I Write Ch-5 The Story of Bitaram | | |
| ❖ ASL Assessment of Speaking and Listening | | |
| Listening Skills Teacher will tell a story and students will listen to it and answer the questions asked by the teacher | | |

| | | |
|---|------------------------------|--------------|
| Speaking Skills | | |
| Different topics will be given and students will speak about them | | |
| * FIRST TERM EXAMS | | |
| | BLUE PRINT FIRST TERM | MARKS |
| ❖ Section 1 (Reading) | Section -1 | 10 |
| Practice of Comprehension Passages (6 to 15) from the book 'Comprehension and Composition ' | Reading | |
| | | |
| | Section -2 | 20 |
| ❖ Section 2 (Writing) | Writing | |
| Describing Paragraphs in Past Tense | | |
| A Visit to a Religious /Spiritual Place | Section -3 | 30 |
| Describing Celebrations | Grammar | |
| eg How I Celebrated Raksha Bandhan/Independence Day etc | | |
| | Section -4 | 20 |
| Informal Letters | Literature | |
| Applications to the Principal for issuing various things like | Q/Ans | |
| Diary /Library Card /Out pass etc | Word Meaning | |
| Letters of Placing Orders | Antonyms | |
| eg Musical Instruments /Furniture etc | Synonyms | |
| Notice Writing | Back Exercises | |
| Articles | Seen Passages | |
| | Total | 80 |
| ❖ Section 3 (Grammar) | | |
| Tenses (Tense-Table) | | |
| Ch-12 Past Tense :Form and Use | | |
| Ch-14 The Pronoun : Kinds | | |
| Ch-5 The Adjective:Kinds of Adjectives | | |
| Ch-6 Articles | | |
| Ch-7 The Verb :Kinds of Verbs | | |
| Ch-8 Verbs : Finite and Non-Finite | | |
| Ch-16 Active and Passive Voice | | |
| | | |
| ❖ Section 4 (Literature) | | |
| Ch-5 The Story of Bitaram | | |
| Ch-1 A Horseman in the Sky | | |
| Syllabus of UT-I will also be included | | |
| | | |

| * PERIODIC TEST -II (UT) | | |
|---|--------------------------|--------------|
| ❖ Section 1 (Reading) | BLUE PRINT UT-11 | MARKS |
| Practice of Comprehension Passages (16 to 20) from the book 'Comprehension and Composition ' | Reading | 8 |
| | Writing | 10 |
| | Grammar | 10 |
| ❖ Section 2 (Writing) | Literature | 12 |
| Paragraphs Describing Plans for the Future eg How Will I Celebrate my Birthday (father /mother etc) | Total | 40 |
| Formal Letters | | |
| Letters of Complaint to various Government Officials. eg To the Post Master complaining about the irregular delivery of Post etc | | |
| To the Health Officer complaining about the insanitary conditions of your locality etc | | |
| ❖ Section 3 (Grammar) | | |
| Tenses (Tense-Table) | | |
| Ch-13 Future Tense:Form and Use | | |
| Ch-9 Adverbs | | |
| Ch-10 Modal Auxiliaries | | |
| Ch-15 Conjunctions | | |
| ❖ Section 4 (Literature) | | |
| Ch-2 The Elroom | | |
| Ch-4 The Two | | |
| | | |
| * SEA -II (ORAL EXAMS) | | |
| ❖ Reading skill | BLUE PRINT SEA-11 | MARKS |
| Reading from the following chapters | Reading | 4 |
| Ch-2 The Elroom | Recitation | 4 |
| Ch-4 The Two | Dictation | 4 |
| | ASL | 4 |
| ❖ Recitation | Listening | 4 |
| Poem | Speaking | 4 |
| If | | |
| | Total | 20 |
| ❖ Dictation | | |
| Dictation from the following chapters | | |
| Ch-2 The Elroom | | |
| Ch-4 The Two | | |
| ❖ ASL ASSESSMENT OF SPEAKING AND LISTENING | | |
| Listening skills | | |
| Teacher will tell a story and students will listen to it and answer the questions asked by the teacher | | |

| | | |
|---|-------------------------------|--------------|
| Speaking Skills | | |
| Different topics will be given and students will speak about them | | |
| * SECOND TERM EXAMS | | |
| | | |
| ❖ Section 1 (Reading) | BLUE PRINT SECOND TERM | MARKS |
| Practice of Comprehension Passages (21 to 30) from the book 'Comprehension and Composition ' | | |
| | Section -1 | 10 |
| | Reading | |
| ❖ Section 2 (Writing) | | |
| Paragraphs Describing Importance of Newspaper /games etc | Section -2 | 20 |
| Need for Saving Water/Environment etc | Writing | |
| ◆ | | |
| Informal Letters | Section -3 | 30 |
| Letters of Appreciation | Grammar | |
| eg For showing good performance in exams /helping poor people etc | | |
| Formal Letters | Section -4 | 20 |
| Letter to father asking for money for different reasons | Literature | |
| | Q/Ans | |
| Message Writing | Word Meaning | |
| Advertisements | Antonyms | |
| | Synonyms | |
| ❖ Section 3 (Grammar) | Back Exercises | |
| Tense (Tense -Table) | Seen Passages | |
| Ch-14 Preposition | Total | 80 |
| Ch-18 Use of Punctuation and Capital Letters | | |
| Ch-19 Phrase and its kinds | | |
| Ch-20 The Clause and its kinds | | |
| Ch-21 Simple, Compound and Complex Sentences | | |
| Ch-22 Transformation of Sentences | | |
| | | |
| ❖ Section 4 (Literature) | | |
| Ch-1 The Horseman in the Sky | | |
| Ch-6 Julius Caesar | | |
| Syllabus of UT-11 will also be included | | |

Hindi Syllabus (2023-2024): CLASS VII

| Periodic Test - 1 (U.T) | BLUE PRINT U.T-1 | MARKS |
|---|-----------------------------|--------------|
| भाग 'क' | भाग क | |
| अपठित गद्यांश | अपठित गद्यांश | 5 |
| | भाग 'ख' साहित्य | |
| भाग 'ख' साहित्य - नई संजीवनी | शब्दार्थ | 2 |
| पाठ-2 जीवन है नाम चुनौती का | अति लघु प्रश्न/उत्तर | 2 |
| पाठ-4 मैं हूँ आपकी रक्त वाहिका | दीर्घ प्रश्न/उत्तर | 6 |
| पाठ-6 दुख | अभ्यास कार्य | 3 |
| पाठ-20 बहता पानी निर्मला | | |
| भाग 'ग' व्याकरण- हिंदी व्याकरण मंजरी | भाग 'ग' व्याकरण | |
| पाठ-1 भाषा व्याकरण और बोली | व्याकरण कार्य | 12 |
| पाठ-2 वर्ण विचार | | |
| पाठ 5 शब्द भेद :-विलोम शब्द(1-33) | भाग 'घ' रचनात्मक गतिविधियाँ | |
| पर्यायवाची शब्द (1 से 18) | अनुच्छेद लेखन | 5 |
| एकार्थक (1 से 8) | पत्र लेखन | 5 |
| अनेकार्थी (1से 8) | कुलांक | 40 |
| अनेक के लिए एक शब्द (1 से 12) | | |
| पाठ-23 मुहावरे (1 से 10) | | |
| *भाग 'घ' रचनात्मक गतिविधियाँ | | |
| अनुच्छेद लेखन:- कंप्यूटर युग | | |
| पत्र लेखन:- औपचारिक पत्र | | |
| विद्यालय में पेयजल की समस्या दूर करने हेतु प्रधानाचार्य जी को पत्र। | | |
| | | |
| SEA-1 (ORAL EXAM) | BLUE PRINT SEA -1 | MARKS |
| पठन कौशल | पठन कौशल | 4 |
| पुस्तक - नई संजीवनी से | कविता गायन | 4 |
| | श्रुतलेख | 4 |
| पाठ 3 भीखा जी कामा | श्रवण कौशल | 4 |
| पाठ-5 शनि सबसे सुंदर ग्रह | वाचन कौशल | 4 |
| पाठ-20 बहता पानी निर्मला | | |
| | कुलांक | 20 |
| कविता गायन | | |
| पाठ -1 जग जीवन में जो चिर महान | | |
| पाठ-7 बाल वर्णन | | |
| पाठ13 मां कह एक कहानी | | |
| श्रुतलेख | | |
| | | |
| पाठ -3 भीखा जी कामा | | |
| पाठ-5 शनि सबसे सुंदर ग्रह | | |
| | | |
| श्रवण कौशल | | |
| | | |
| गद्यांश या कहानी को सुनाकर प्रश्न/उत्तर पूछे जाएँगे। | | |
| | | |

| | | |
|--|-----------------------------|-------|
| वाचन कौशल | | |
| पुस्तक से कहानी का सार सुनाना। किसी एक विषय पर कहानी/ भाषण प्रस्तुत करना | | |
| FIRST TERM EXAM | | |
| | BLUE PRINT FIRST TERM | MARKS |
| भाग 'क' | *भाग 'क' | |
| अपठित गद्यांश | अपठित गद्यांश | 5 |
| भाग 'ख' साहित्य नई संजीवनी से | *भाग 'ख' साहित्य | |
| | पठित काव्यांश | 4 |
| पठित काव्यांश | शब्दार्थ | 4 |
| पाठ-8 भीड़ में खोया आदमी | अति लघु प्रश्न/उत्तर | 3 |
| पाठ-9 सभ्य वेश में | दीर्घ प्रश्न/उत्तर | 6 |
| पाठ-10 हजरत निजामुद्दीन औलिया | अभ्यास कार्य | 8 |
| पाठ -11 बापू की कुटिया में | | |
| पाठ-12 कीचक वध | भाग 'ग' व्याकरण | |
| | व्याकरण कार्य | 25 |
| भाग 'ग' हिंदी व्याकरण मंजरी | | |
| पाठ-3 शब्द विचार | भाग 'घ' रचनात्मक गतिविधियाँ | |
| पाठ-4 संधि | | |
| पाठ-6 संज्ञा | अनुच्छेद लेखन | 5 |
| पाठ -7 संज्ञा विकार लिंग | पत्र लेखन | 5 |
| पाठ -8 संज्ञा विकार वचन | नारा लेखन | 5 |
| पाठ 9 कारक | विज्ञापन लेखन | 5 |
| पाठ-10 सर्वनाम | विज्ञापन लेखन | 5 |
| पाठ -11 विशेषण | | |
| पाठ -5*शब्द भंडार :-विलोम शब्द(34-66), पर्यायवाची शब्द (19-36),एकार्थक शब्द(9-15), अनेकार्थक शब्द(9-16), अनेक के लिए एक शब्द(13-26) लोकोक्तियाँ(1-6) ,मुहावरे (11-25) समश्रुतभिन्नार्थक(1-20) | कुलांक | 80 |
| भाग 'घ' रचनात्मक गतिविधियाँ | | |
| अनुच्छेद लेखन:- हमारा देश भारत,आदर्श विद्यार्थी | | |
| पत्र लेखन:- औपचारिक पत्र | | |
| बस सुविधा बढ़ाने के लिए प्रधानाचार्य जी को पत्र लिखिए। | | |
| अपने क्षेत्र की सफाई के लिए स्वास्थ्य अधिकारी को पत्र लिखें। | | |
| नारा लेखन :- दिए गए किसी एक विषय पर नारा लेखन लिखें | | |
| लघुकथा : दिए गए किसी एक विषय पर लघु कथा लिखिए | | |
| विज्ञापन लेखन :- दिए गए किसी एक विषय पर विज्ञापन लेखन बनाएँ। | | |

| PERIODIC TEST-2 (U.T) | | |
|--|-----------------------------|-------|
| | BLUE PRINT U.T-2 | MARKS |
| भाग 'क' | भाग 'क' | |
| अपठित गद्यांश | अपठित गद्यांश | 4 |
| | भाग 'ख' साहित्य | |
| | शब्दार्थ | 2 |
| भाग 'ख' साहित्य | अति लघु प्रश्न/उत्तर | 3 |
| पाठ-14 सिक्किम | दीर्घ प्रश्न/उत्तर | 6 |
| पाठ-15 आचार्य सुश्रुत | अभ्यास कार्य | 3 |
| पाठ -16 सांप के बारे में पत्र | | |
| पाठ-17 उठो पार्थ गांडीव संभालो | भाग 'ग' व्याकरण | |
| भाग 'ग' व्याकरण | व्याकरण कार्य | 12 |
| पाठ-12 क्रिया | | |
| पाठ-13 क्रिया काल | भाग 'घ' रचनात्मक गतिविधियाँ | |
| पाठ -14 वाच्य | अनुच्छेद लेखन | 5 |
| पाठ-5 शब्द भंडार :- विलोम शब्द (67-83), पर्यायवाची(37-54), एकार्थक शब्द(16-23), मुहावरे(26-35), अनेक के लिए एक शब्द(27-39), समश्रुत भिन्नार्थक(21-35), लोकोक्तियाँ(7-12) | पत्र लेखन | 5 |
| | कुलांक | 40 |
| | | |
| भाग 'घ' रचनात्मक गतिविधियाँ | | |
| | | |
| अनुच्छेद लेखन :- समय का महत्व, बाढ़ का दृश्य | | |
| पत्र लेखन :- अनौपचारिक पत्र | | |
| अपने मित्र को परीक्षा में असफल होने पर सांत्वना पत्र लिखिए मित्र को वार्षिकोत्सव का वर्णन करते हुए पत्र लिखिए। | | |
| | | |
| SEA-2 (ORAL EXAM) | BLUE PRINT SEA -2 | MARKS |
| | पठन कौशल | 4 |
| पठन कौशल | कविता गायन | 4 |
| पुस्तक - नई संजीवनी से | श्रुतलेख | 4 |
| पाठ-17 उठो पार्थ गांडीव संभालो | श्रवण कौशल | 4 |
| पाठ-18 अफसर | वाचन कौशल | 4 |
| पाठ-21 हमारा स्वतंत्रता संग्राम | | |
| | कुलांक | 20 |
| कविता गायन | | |
| पाठ -19 जलियाँ वाले बाग में बसंत | | |
| पाठ-22 बहुत दिनों के बाद | | |
| | | |
| श्रुतलेख | | |
| पाठ -18 अफसर | | |
| पाठ -21 हमारा स्वतंत्रता संग्राम | | |

| | | |
|--|-------------------------------|--------------|
| | | |
| ☞ श्रवण कौशल | | |
| कोई एक कहानी सुनाकर प्रश्न पूछे जाएँगे। | | |
| | | |
| ☞ वाचन कौशल | | |
| पुस्तक से कहानी का सार सुनाना | | |
| | | |
| SECOND TERM EXAM | | |
| | BLUE PRINT SECOND TERM | MARKS |
| ☞ भाग 'क' | | |
| | भाग 'क' | |
| अपठित गद्यांश | अपठित गद्यांश | 5 |
| | | |
| ☞ भाग 'ख' साहित्य नई संजीवनी | भाग 'ख' साहित्य | |
| पठित काव्यांश | शब्दार्थ | 4 |
| | पठित काव्यांश | 4 |
| पाठ-23 संतो के जीवन प्रसंग | अति लघु प्रश्न/उत्तर | 3 |
| पाठ- 24 कायर मत बन | दीर्घ प्रश्न/उत्तर | 6 |
| पाठ -25 धन वर्षण | अभ्यास कार्य | 8 |
| पाठ -26 स्वामी दयानंद सरस्वती | | |
| | भाग 'ग' व्याकरण | |
| | व्याकरण कार्य | 25 |
| | | |
| | भाग 'घ' रचनात्मक गतिविधियाँ | |
| ☞ भाग 'ग' हिंदी व्याकरण मंजरी | अनुच्छेद लेखन | 5 |
| पाठ -15 उपसर्ग | पत्र लेखन | 5 |
| पाठ -16 प्रत्यय | नारा लेखन | 5 |
| पाठ-17 समास | लघु कथा | 5 |
| पाठ 18 वाक्य | विज्ञापन | 5 |
| पाठ 19 अशुद्धि शोधन | | |
| पाठ-20 अव्यय | | |
| पाठ -21 विराम चिन्ह | | |
| पाठ- 22 अलंकार | | |
| पाठ-5 शब्दभंडार :-विलोम शब्द(III row), पर्यायवाची शब्द (55-72),एकार्थक शब्द (24-30) अनेकार्थी शब्द(17-30) ,अनेक के लिए एक शब्द (40-50),मुहावरे (36- 50)लोकोक्तियाँ(13-23) समश्रुतभिन्नार्थक(36-56) | कुलांक | 80 |
| ☞ भाग 'घ' रचनात्मक गतिविधियाँ | | |
| ☞ अनुच्छेद : परोपकार ,दिल्ली के दर्शनीय स्थल | | |
| ☞ पत्र लेखन अनौपचारिक पत्र | | |
| पुस्तकें मंगवाने के लिए पुस्तक अधिकारी को पत्र लिखें। | | |
| छोटे भाई को पढ़ाई के साथ-साथ व्यायाम करने की सलाह देते हुए पत्र लिखिए। | | |
| ☞ लघु कथा- दिए गए विषय पर लघु कथा लिखें। | | |
| नारा लेखन - दिए गए विषय पर नारा लिखें। | | |
| विज्ञापन - दिए गए विषय पर विज्ञापन बनाएँ। | | |

MATHS SYLLABUS (2023-2024): Class 7th

❄ PERIODIC TEST -1 (UT)

| CH 1 Integers | BLUE PRINT UT-1 | MARKS |
|----------------------------------|-------------------|-----------|
| CH2 Fraction and Decimals | • CH-1 | 15 |
| CH 14 symmetry | • CH-2 | 15 |
| | •CH-14 | 5 |
| APTITUDE SKILLS | • APTITUDE SKILLS | 5 |
| CH-1- Analogy and Classification | TOTAL | 40 |
| CH-3- Mirror and water Images | | |

❄ SEA -1 (ORAL EXAMS)

| ❖ Viva-Voce | BLUE PRINT SEA-1 | MARKS |
|--|------------------|-----------|
| ● Concept based questions will be asked orally | • VIVA VOICE | 5 |
| ❖ Tables | • TABLES | 5 |
| ● (2-20) | • MENTAL ABILITY | 5 |
| ❖ Mental Ability | • ACTIVITIES | 5 |
| ◆ (MCQ) | TOTAL | 20 |
| ❖ Activities | | |
| • To represent integers on the number line | | |
| • Activity of symmetry | | |
| • Angled formed in parallel lines | | |
| • Activity related to fractions | | |
| • To draw angles with the help of compass | | |
| • Activity on exponents by paper folding method. | | |

❄ FIRST TERM EXAMS

| ❖ Chapter | BLUE PRINT | FIRST TERM | MARKS |
|--|-------------------|------------|-----------|
| CH1 Integers | • CH-1 | | 10 |
| CH2 Fraction and Decimals | • CH-2 | | 10 |
| CH 4 Simple Equation | • CH-4 | | 10 |
| CH 5 Lines and angles | • CH-5 | | 10 |
| CH 9 Rational Numbers | • CH-9 | | 10 |
| CH 8 Comparing Quantities | • CH-8 | | 10 |
| CH 13 Exponents and power | • CH-13 | | 10 |
| CH14 Symmetry | • CH -14 | | 5 |
| | • APTITUDE SKILLS | | 5 |
| APTITUDE SKILLS | | | |
| Ch 1 Analogy and Classification | TOTAL | | 80 |
| Ch 3 Mirror and water Images | | | |
| Ch 5 Logical venn diagram | | | |
| Ch 7 Embedded Figures | | | |
| Ch 9 Cubes and dice | | | |
| Ch 11 Paper Folding and paper cutting | | | |
| SAMPLE PAPER 1 | | | |
| VEDIC MATHS | | | |
| • Techniques of Tables | | | |
| • Techniques of Multiplication by 11, 111, 1111• | | | |

❄ **PERIODIC TEST -II (UT)**

| CH-6 The Triangle and its properties | BLUE PRINT UT - II | MARKS |
|--------------------------------------|--------------------|-----------|
| CH-12 Algebraic Expressions | • CH-6 | 10 |
| CH-3 Data Handling | • CH-12 | 10 |
| APTITUDE SKILLS | • CH-3 | 15 |
| CH-2 Coding Decoding | • APTITUDE SKILLS | 5 |
| CH-4 Blood Relation | TOTAL | 40 |
| SAMPLE PAPER 2 | | |

❄ **SEA -II (ORAL EXAMS)**

| ❖ Viva-Voce | BLUE PRINT SEA - II | MARKS |
|---|---------------------|-----------|
| Concept based questions will be asked orally | • VIVA- VOICE | 5 |
| ❖ Tables | • TABLES | 5 |
| ♦ (2-20) | • MENTAL ABILITY | 5 |
| ❖ Mental Ability | ACTIVITIES | 5 |
| ♦ (MCQ) | TOTAL | 20 |
| ❖ Activities | | |
| • To verify the angle sum property of triangle | | |
| • To verify the exterior angle property of triangle | | |
| • To make a net of cube by paper folding method | | |
| • Activity related to double bar graph | | |
| • Find the area of shaded region | | |

❄ **FINAL TERM EXAMS**

| ❖ Chapters | BLUE PRINT FINAL TERM | MARKS |
|---|-----------------------|-----------|
| Ch 3 Data Handling | • CH-1 | 5 |
| Ch 6 The Triangle and its properties | • CH-2 | 5 |
| Ch 7 Congruence of Triangle | • CH-3 | 10 |
| Ch 12 Algebraic Expressions | • CH-4 | 5 |
| Ch 11 Perimeter and Area | • CH-6 | 10 |
| Ch 15 Visualizing Solid Shapes | • CH-7 | 6 |
| | • CH-8 | 10 |
| CHAPTERS OF FIRST TERM WILL BE INCLUDED IN 2ND TERMS | | |
| Ch 1 Integers | • CH-11 | 10 |
| Ch 2 Fraction and Decimals | • CH-12 | 10 |
| Ch 4 Simple Equation | • CH-15 | 4 |
| Ch 8 Comparing Quantities | • APTITUDE SKILLS | 5 |
| | TOTAL | 80 |
| APTITUDE SKILLS | | |
| Ch 2 Coding Decoding | | |
| Ch 4 Blood Relation | | |
| Ch 6 Direction sense test | | |
| Ch 8 Analytical Reasoning | | |
| Ch 10 Puzzle Test | | |
| SAMPLE PAPER-3 | | |
| Vedic Maths | | |
| • Square of a Number Ending with 5 | | |
| • Multiplication with 9, 99, 999, 9999 | | |

SCIENCE SYLLABUS (2023-2024): Class 7th

| * PERIODIC TEST -1 (UT) | | |
|---|------------------------------|-------------------|
| ❖ Chapters | BLUE PRINT UT - 1 | MARKS |
| 1. Nutrition in Plants | •SECTION-A | |
| 2. Nutrition in Animals | Very Short Questions | 1x4=4 |
| 6. Physical and Chemical Changes | Assertion-Reasoning | 1x3=3 |
| | •SECTION- B | |
| | Short Answer-I | 2x5=10 |
| | •SECTION-C | |
| | Short Answer-II | 3x3=9 |
| | •SECTION-D | |
| | Case Study | 4x1=4 |
| | •SECTION-E | |
| | Long Questions | 5x2=10 |
| | TOTAL | 40 |
| * SEA -1 (ORAL EXAMS) | | |
| ❖ Viva-Voce | | |
| Ch-17.Forests | BLUE PRINT SEA - 1 | MARKS |
| 5.Acids,bases and Salts | •Viva-Voce | 5 |
| | •Identification | 5 |
| ❖ Project Work | | |
| April-Prepare a report on" Importance of vitamins in diet". | •Activity | 5 |
| May-Write the advantages and disadvantages of Chemical changes on A4 size sheet. | •Project-Work | 5 |
| | Total | 20 |
| ❖ Diagrams | | |
| <ul style="list-style-type: none"> ● Photosynthesis, Pitcher Plant, Set of teeth, Taste areas of tongue, Oesophagus, Human Digestive System, Amoeba, Physical changes, Chemical changes, Food chain, Food web, Simple pendulum, Schematic diagram of blood circulation in heart, Human Excretory system. | | |
| * FIRST TERM EXAMS | | |
| ❖ Chapters | BLUE PRINT FIRST TERM | MARKS |
| 17.Forests Our lifeline | 1 . Section -A | |
| 11.Transportation in Plants and Animals | Very Short Questions | 1x8=8 |
| 13.Time and Motion | (Assertion-Reasoning) | |
| 1.Nutrition in Plants | MCQ | 1x5=5 |
| 2.Nutrition in Animals | | |
| 3.Acids,Bases and Salts | 2 . Section -B | |
| 6.Physical and Chemical Changes | Short Answer-I | 2x9=18 |
| | Short Answer-II | 3x7=21 |
| | 3 . Section -C | |
| | Case Study | 4x2=8 |
| ❖ Activity | | |
| Difference between Acids and Bases by using Indicators. | 4 . Section -D | |
| Show Blood Circulation in Heart with the help of a Schematic Diagram. | Long question | 5 x 4 = 20 |
| | TOTAL | 80 |

| * PERIODIC TEST -II (UT) | | |
|--|-------------------------------|--------------|
| ❖ Chapters | BLUE PRINT UT - II | MARKS |
| 14. Electric Current and its Effects | ❖ Section -A | |
| 15.Light | Very Short Questions | 1x4=4 |
| 10.Respiration in Organisms | Assertion-Reasoning | 1x3=3 |
| | ❖ Section -B | |
| | Short Answer-I | 2x5=10 |
| | ❖ Section -C | |
| | Short Answer-II | 3x3=9 |
| | ❖ Section -D | |
| | Case Study | 4x1=4 |
| | ❖ Section -E | |
| | Long Questions | 5x2=10 |
| | TOTAL | 40 |
| * SEA -II (ORAL EXAMS) | | |
| ❖ Viva-Voce | | |
| Ch. 12. Reproduction in Plants | BLUE PRINT SEA - II | MARKS |
| | •Viva-Voce | 5 |
| | •Identification | 5 |
| | •Activity | 5 |
| | •Project-Work | 5 |
| | Total | 20 |
| ❖ Project Work /Activity | | |
| October- To show heating effect of electric current. | | |
| November- Make a poster on harmful effects of burning crackers. | | |
| ❖ Diagrams | | |
| <ul style="list-style-type: none"> • Diagrams: Thermometer, Conduction, Convection, Sea breeze, Land Breeze, Human Respiratory System, Changes of gases in the alveolus, Parts of flower, Fragmentation, Grafting, Stamen, Pistil, Self- Pollination , Cross -Pollination, Fertilisation, Electrical components , Open circuit, Close circuit, Ray diagram, Electromagnet, Electric bell, Reflection | | |
| * SECOND TERM EXAMS | | |
| ❖ Chapters | BLUE PRINT SECOND TERM | MARKS |
| 12. Reproduction in Plants | 1 . Section -A | |
| 4. Heat and its effects | Very Short Questions | 1x8=8 |
| 18.Waste water Story | Assertion-Reasoning | |
| | MCQ's | 1x5=5 |
| 14.Electric Current and its Effects | | |
| 15.Light | 2 . Section -B | |
| 10.Respiration in organisms | Short Answer-I | 2x9=18 |
| 6.Physical and Chemical Changes | Short Answer-II | 3x7=21 |
| | | |
| | 3 . Section -C | |
| | Case Study | 4x2=8 |
| ❖ ACTIVITY | | |
| DECEMBER: Prepare a a report – “Save precious monuments of india” | • SECTION-D | |
| JANUARY: Prepare a report on- “Give waste another chance”. | Long Questions | 5x4=20 |
| February: Make a poster on "Harmful Effects of Smoking". | | |
| | TOTAL | 80 |

SOCIAL SCIENCE SYLLABUS (2023-2024): Class VII

✳ **PERIODIC TEST -1 (UT)**

| ❖ Chapters | BLUE PRINT UT -1 | MARKS |
|--|----------------------------|---------------|
| Ch-1 The Environment in its totality | MCQs | 1*4=4 |
| Ch-2 Earth's Interior | Assertion | 1*2=2 |
| Ch-2 New Kings and Kingdoms | 1 mark ques | 1*2=2 |
| Ch-5 Advertising | 2 marks ques | 2*2=4 |
| | 3 marks ques | 3*2=6 |
| | 4 mark ques (Case | 1*4=4 |
| Flow Chart | 5 marks ques | 5*2=10 |
| 1. Components of Environment | Flow chart/ Diagram | 4*1=4 |
| 2. Formation of Advertisement | Map Work | 4*1=4 |
| 3. Sources of studying medieval Indian History | Total | 40 |

❖ **Map Work**

1. States and capitals of India
2. Neighbouring countries of India

✳ **SEA -1 (ORAL EXAMS)**

❖ **Viva-Voce**

| Ch-1 Where, When and How | BLUE PRINT SEA - 1 | MARKS |
|---------------------------|---------------------------|----------------|
| Ch-3 Our Changing Earth-1 | Viva | 1*5=5 |
| | Map Work | 5*1=5 |
| ❖ Map Work | Project | 10*1=10 |

1. Union Territories of India
2. Water bodies found in India

Paste the following pictures in the notebooks:

1. Pictures related to 'Save Natural Resources' and write about it.
2. Prepare a social advertisement on any current issue.
3. Paste pictures showing causes of Global Warming.

❖ **Project Work**

1. Make a project showing the movement of tectonic plates.

✳ **FIRST TERM EXAMS**

| ❖ Chapters | Blue Print | Marks |
|--------------------------------------|------------------------------------|---------------|
| Ch-1 The Environment in its totality | MCQs | 1*8=8 |
| Ch-2 Earth's Interior | Assertion | 1*2=2 |
| Ch-2 New Kings and Kingdoms | Match It/ One-word | 1*4=4 |
| Ch-3 The Delhi Sultanate | 1 mark ques | 1*6=6 |
| Ch-5 Air | 2 mark ques | 2*4=8 |
| Ch-6 Water | 3 mark ques | 3*5=15 |
| Ch-5 Advertising | 5 mark ques | 4*5=20 |
| Ch-1 Democracy | Case study (Unseen Passage) | 4*1=4 |
| Ch-7 Markets Around It | Picture-based ques | 4*1=4 |
| Ch-7 Natural Vegetation and Wildlife | Flow chart/ Diagram | 4*1=4 |
| Map Work: | Map Work | 5*1=5 |
| 1. States and Capitals of India | Total | 80 |

| | | |
|--|---|--------------|
| 2. Major sea-ports found in India | | |
| 3. Different types of Natural Vegetation | | |
| | | |
| Diagram: | | |
| 1. Domains of the Earth | | |
| 2. Layers of the Atmosphere | | |
| 3. Structure of the Earth | | |
| | | |
| Flowchart: | | |
| 1. Major dynasties of Delhi Sultanate | | |
| 2. Components of Environment | | |
| 3. Different types of Natural Vegetation | | |
| | | |
| * PERIODIC TEST -2 (UT) | | |
| ❖ Chapters | Blueprint UT- 2 | Marks |
| Ch-4 Media and Democracy | MCQs | 1*4=4 |
| Ch-8 Human environment settlement, transport and communication | Assertion | 1*2=2 |
| Ch-8 Popular Beliefs and Religious Debates | 1 mark ques | 1*2=2 |
| Ch-4 The Mughal Empire | 2 mark ques | 2*2=4 |
| | 3 mark ques | 3*2=6 |
| | 4 mark ques (Case Study/ Picture-based) | 1*4=4 |
| ❖ Flowchart: | | |
| 1. Different Types of Media | 5 mark ques | 5*2=10 |
| 2. Important Rulers of Mughal Empires | | |
| 3. Important Features of Bhakti Movement | Flow chart/ Diagram | 4*1=4 |
| | Map Work | 4*1=4 |
| ❖ Map Work | | |
| Important Airports of India | Total | 40 |
| Neighbouring Countries of India | | |
| Major Cities of Mughal Empire | | |
| | | |
| * SEA -2 (ORAL EXAMS) | | |
| ❖ Viva-Voce | | |
| Ch-7 Social Change: Mobile and Settled Communities | Blueprint SEA-2 | Marks |
| Ch-9 The Growth of Regional Cultures | Viva | 5 |
| Ch-3 Our Changing Earth | Map Work | 5 |
| | Project | 10 |
| ❖ Map Work | Total | 20 |
| 1. Different types of Soil | | |
| 2. Major oceans of the world | | |
| | | |

| | | |
|---|---------------------|--------------|
| ❖ Paste the following pictures in the note books / Activities | | |
| 1. Kabir is famous for his Dohas. Write 5 of his important Dohas with their meanings in Scrap file. | | |
| 2. Write any 10 slogans given by freedom fighters in fair notebook. | | |
| | | |
| ❖ Project Work: | | |
| | | |
| 1. Prepare a commercial advertisement on your favorite topic | | |
| 2. Prepare your individual views on the topic 'Pollution-its ill-effects and measures to reduce it' for a class debate. | | |
| | | |
| ❖ FINAL TERM EXAMS | | |
| ❖ Chapters | Blue Print | Marks |
| Ch-4 The Mughal Empire | MCQs | 1*8=8 |
| Ch-8 Popular Beliefs and Religious Debates | | |
| Ch-10 New Political Formation in the 18th century | Assertion | 1*2=2 |
| Ch-8 Human Environment, Settlement, Transport and Communication | Match It/ One-word | 1*4=4 |
| Ch-9 Life in the Tropical and Sub-Tropical Regions | 1 mark ques | 1*6=6 |
| Ch-10 Life in the Temperate Grasslands. | 2 mark ques | 2*4=8 |
| | | |
| Ch-11 Life in the Deserts- Sahara and Ladakh Desert | 3 mark ques | 3*5=15 |
| | 5 mark ques | 4*5=20 |
| Ch-2 Institutional representation of Democracy | Passage) | 4*1=4 |
| Ch-3 The State Government | Picture-based ques | 4*1=4 |
| Ch-4 Media and Democracy | Flow chart/ Diagram | 4*1=4 |
| | Map Work | 5*1=5 |
| ❖ Map Work | | |
| 1.Important Airports of India | Total | 80 |
| 2.Important seaports of India | | |
| 3. Neighbouring Countries of India | | |
| ❖ Flow Charts | | |
| 1.Different Types of Transport | | |
| 2.Types of Media | | |
| 3.Time Line of Mughal Empire | | |
| 4. Reasons for the Decline of Mughal Empire | | |
| | | |
| ❖ Diagrams: | | |
| 1. Water Cycle | | |
| 2. Layers of the Earth | | |
| | | |

PUNJABI SYLLABUS (2023-2024) : Class VII

| * PERIODIC TEST -1 (UT) | | | |
|--------------------------------------|--------------------------|-------------------|--------------|
| | BLUE PRINT | UT - 1 | MARKS |
| ਅਣਡਿੱਠਾ ਪੈਰਾ | ਅਣਡਿੱਠਾ ਪੈਰਾ | | 5 |
| ਪੰਜਾਬੀ ਪਾਠ ਪੁਸਤਕ -2 | ਸ਼ਬਦ -ਅਰਥ | | 2 |
| ਪਾਠ -1 ਤੋਂ 3 ਤੱਕ ਅਭਿਆਸ ਸਹਿਤ | ਪ੍ਰਸ਼ਨ-ਉੱਤਰ | | 4 |
| ਪੰਜਾਬੀ ਵਿਆਕਰਣ-ਰੁਤਬਾ-2 | ਖਾਲੀ-ਥਾਵਾਂ ਭਰੋ | | 2 |
| ਭਾਸ਼ਾ ਜਾਂ ਬੋਲੀ (ਪਰਿਭਾਸ਼ਾ, ਭੇਦ) | ਵਾਕਾਂ ਵਿੱਚ ਵਰਤੋਂ | | 2 |
| ਵਿਆਕਰਣ ਦੀ ਪਰਿਭਾਸ਼ਾ, ਭੇਦ | ਬਹੁਵਿਕਲਪੀ ਪ੍ਰਸ਼ਨ | | 2 |
| ਅੱਖਰ ਬੋਧ | ਬੋਲੀ | | 2 |
| ਲਿੰਗ ਬਦਲੇ- ਪੇਜ 37 | ਵਿਆਕਰਣ | | 1 |
| ਵਚਨ ਬਦਲੇ- ਪੇਜ 42 | ਅੱਖਰ ਬੋਧ | | 2 |
| ਵਿਰੋਧੀ ਸ਼ਬਦ- ਪੇਜ 46 (ਪਹਿਲੀ ਲਾਇਨ) | ਲਿੰਗ ਬਦਲੇ | | 2 |
| ਬਹੁਤੇ ਸ਼ਬਦਾਂ ਲਈ ਇੱਕ ਸ਼ਬਦ -ਪੇਜ 58 | ਵਚਨ ਬਦਲੇ | | 2 |
| ਲੇਖ ਰਚਨਾ- ਮੈਂ, ਗਾਂ | ਵਿਰੋਧੀ ਸ਼ਬਦ | | 2 |
| ਕਹਾਣੀ- ਪਿਆਸਾ ਕਾਂ | ਬਹੁਤੇ ਸ਼ਬਦਾਂ ਲਈ ਇੱਕ ਸ਼ਬਦ | | 2 |
| ਪੱਤਰ ਰਚਨਾ-ਜਰੂਰੀ ਕੰਮ ਲਈ ਛੁੱਟੀ ਲੈਣ ਲਈ | ਲੇਖ ਰਚਨਾ | | 5 |
| ਮੁਖਅਧਿਆਪਕਾ ਨੂੰ ਬੇਨਤੀ ਪੱਤਰ। | ਪੱਤਰ ਰਚਨਾ ਜਾਂ ਕਹਾਣੀ | | 5 |
| ਆਪਣੇ ਮਿੱਤਰ ਨੂੰ ਪਾਸ ਹੋਣ ਤੇ ਵਧਾਈ ਪੱਤਰ। | | | |
| | | | |
| | ਕੁੱਲ ਨੰਬਰ | | 40 |
| * SEA -1 (ORAL EXAMS) | | | |
| | BLUE PRINT | SEA - 1 | MARKS |
| ਪਾਠ 1 ਤੋਂ 4 ਤਕ ਦਾ ਪਠਨ-ਪਾਠਨ | | ਪਾਠ-ਪਠਨ | 5 |
| ਕਵਿਤਾ ਪਾਠ (1 ਅਤੇ 4) | | ਕਵਿਤਾ-ਪਾਠ | 5 |
| ਪਾਠ 1 ਅਤੇ 4 ਤਕ ਦੇ ਅੱਖੇ ਸ਼ਬਦ | | ਅੱਖੇ ਸ਼ਬਦ | 5 |
| | | ਪ੍ਰਜੈਕਟ ਵਰਕ | 5 |
| | | | |
| | ਕੁੱਲ ਨੰਬਰ | | 20 |
| * FIRST TERM EXAMS | | | |
| | BLUE PRINT | FIRST TERM | MARKS |
| ਅਣਡਿੱਠਾ ਪੈਰਾ | | ਅਣਡਿੱਠਾ ਪੈਰਾ | 5 |
| ਪੰਜਾਬੀ ਪਾਠ ਪੁਸਤਕ -2 | | ਸ਼ਬਦ -ਅਰਥ | 4 |
| ਪਾਠ 1 ਤੋਂ 6 ਤਕ ਅਭਿਆਸ ਸਹਿਤ | | ਪ੍ਰਸ਼ਨ-ਉੱਤਰ | 8 |
| ਪੰਜਾਬੀ ਵਿਆਕਰਣ ਰੁਤਬਾ-2 | | ਖਾਲੀ ਥਾਵਾਂ ਭਰੋ | 4 |
| ਭਾਸ਼ਾ ਜਾਂ ਬੋਲੀ ਦੀ ਪਰਿਭਾਸ਼ਾ ਤੇ ਭੇਦ | | ਬਹੁ ਵਿਕਲਪੀ ਪ੍ਰਸ਼ਨ | 4 |
| ਵਿਆਕਰਣ ਦੀ ਪਰਿਭਾਸ਼ਾ ਤੇ ਭੇਦ | | ਵਾਕਾਂ ਵਿੱਚ ਵਰਤੋਂ | 3 |
| ਅੱਖਰ ਬੋਧ | | ਬੋਲੀ ਜਾਂ ਭਾਸ਼ਾ | 2 |
| ਲਗਾਂ ਤੇ ਲਗਾਖਰ | | | |

| | | |
|--|--------------------------|----|
| ਨਾਂਵ ਦੀ ਪਰਿਭਾਸ਼ਾ ਤੇ ਭੇਦ | ਵਿਆਕਰਣ | 2 |
| | ਨਾਂਵ | 2 |
| ਲਿੰਗ ਬਦਲੇ- ਪੇਜ ਨੰ 37 (ਪਹਿਲੀ ਅਤੇ ਦੂਜੀ ਲਾਇਨ) | ਲਿੰਗ ਬਦਲੇ | 3 |
| ਵਚਨ ਬਦਲੇ-ਪੇਜ ਨੰ 42 (ਪਹਿਲੀ ਲਾਇਨ) | ਵਚਨ ਬਦਲੇ | 3 |
| ਵਿਰੋਧੀ ਸ਼ਬਦ ਪੇਜ ਨੰ 46 (ਪਹਿਲੀ ਅਤੇ ਦੂਜੀ ਲਾਇਨ) | ਵਿਰੋਧੀ ਸ਼ਬਦ | 3 |
| ਬਹੁਤੇ ਸ਼ਬਦਾਂ ਲਈ ਇੱਕ ਸ਼ਬਦ - 1-13 ਤਕ | ਅਸੂਧ-ਸੂਧ | 3 |
| ਅਸੂਧ-ਸੂਧ- ਪੇਜ ਨੰ 49 | ਬਹੁਤੇ ਸ਼ਬਦਾਂ ਲਈ ਇੱਕ ਸ਼ਬਦ | 2 |
| ਦਿਨਾਂ ਦੇ ਨਾਂ | ਦਿਨਾਂ ਦੇ ਨਾਂ | 7 |
| ਮੁਹਾਵਰੇ-1 ਤੋਂ 10 ਤਕ | | |
| ਲੇਖ ਰਚਨਾ- ਮੈਂ, ਗਾਂ, ਮੇਰਾ ਅਧਿਆਪਕ, ਮੇਰੀ ਪੰਜਾਬੀ ਪੁਸਤਕ | ਲੇਖ ਰਚਨਾ | 10 |
| ਕਹਾਣੀ- ਪਿਆਸਾ ਕਾਂ, ਅੰ ਗੁਰ ਖੱ ਟੇ ਹਨ। | ਕਹਾਣੀ | 5 |
| ਪੱਤਰ ਰਚਨਾ-ਜਰੂਰੀ ਕੰ ਮ ਲਈ ਛੁਟੀ ਲੈਣ ਲਈ ਮੁਖਅਧਿਆਪਕਾ ਨੂੰ ਬੇਨਤੀ ਪੱਤਰ। | ਪੱਤਰ ਰਚਨਾ | 6 |
| | ਮੁਹਾਵਰੇ | 4 |
| ਮਿੱਤਰ ਜਾਂ ਸਹੇਲੀ ਨੂੰ ਪਾਸ ਹੋਣ ਤੇ ਵਧਾਈ ਪੱ ਤਰ। | | |
| ਆਪਣੇ ਪਿਤਾ ਜੀ ਤੋਂ ਪੈਸੇ ਮੰਗਵਾਉਣ ਲਈ ਪੱਤਰ। | | |
| | ਕੁੱਲ ਨੰਬਰ | 80 |

❖ PERIODIC TEST -2 (UT)

| | BLUE PRINT UT - 2 | MARKS |
|--|--------------------------|-------|
| ਅਣਡਿੱਠਾ ਪੈਰਾ | | |
| ਪੰਜਾਬੀ ਪਾਠ ਪੁਸਤਕ -2 | ਅਣਡਿੱਠਾ ਪੈਰਾ | 5 |
| ਪਾਠ -7 ਤੋਂ 13 ਤੱਕ ਅਭਿਆਸ ਸਹਿਤ | ਸ਼ਬਦ -ਅਰਥ | 2 |
| ਪੰਜਾਬੀ ਵਿਆਕਰਣ-ਰੁਤਬਾ-2 | ਪ੍ਰਸ਼ਨ-ਉੱਤਰ | 4 |
| ਸ਼ਬਦ ਬੋਧ | ਖਾਲੀ-ਥਾਵਾਂ ਭਰੋ | 2 |
| ਵਾਕ ਬੋਧ | ਵਾਕਾਂ ਵਿੱਚ ਵਰਤੋਂ | 2 |
| | ਬਹੁਵਿਕਲਪੀ ਪ੍ਰਸ਼ਨ | 2 |
| ਲਿੰਗ ਬਦਲੇ- ਪੇਜ 38 | ਸ਼ਬਦ ਬੋਧ | 1 |
| ਵਚਨ ਬਦਲੇ- ਪੇਜ 42 (ਦੂਜੀ ਲਾਇਨ) | ਵਾਕ ਬੋਧ | 2 |
| ਵਿਰੋਧੀ ਸ਼ਬਦ- ਪੇਜ 47 | ਲਿੰਗ ਬਦਲੇ | 2 |
| ਅਸੂਧ-ਸੂਧ- ਪੇਜ ਨੰ 50 | ਵਚਨ ਬਦਲੇ | 2 |
| ਬਹੁਤੇ ਸ਼ਬਦਾਂ ਲਈ ਇੱਕ ਸ਼ਬਦ -14 ਤੋਂ 20 ਤਕ | ਵਿਰੋਧੀ ਸ਼ਬਦ | 2 |
| ਲੇਖ ਰਚਨਾ- ਮੇਰਾ ਮਿੱਤਰ, ਸ਼ੇਰ | ਅਸੂਧ-ਸੂਧ | 2 |
| ਕਹਾਣੀ- ਲਾਲਚੀ ਕੁੱਤਾ | ਬਹੁਤੇ ਸ਼ਬਦਾਂ ਲਈ ਇੱਕ ਸ਼ਬਦ | 2 |
| ਪੱਤਰ ਰਚਨਾ- ਫੀਸ ਮੁਆਫੀ ਲਈ ਆਪਣੇ ਮੁਖਅਧਿਆਪਕਾ ਨੂੰ ਬੇਨਤੀ ਪੱ ਤਰ। | ਲੇਖ ਰਚਨਾ | 5 |
| ਚਾਚਾ ਜੀ ਨੂੰ ਤੁਹਾਡੇ ਜਨਮਿਦਨ ਤੇ ਤੋਹਫਾ ਭੇਜਣ ਲਈ ਧੰਨਵਾਦ ਪੱ ਤਰ। | ਪੱਤਰ ਰਚਨਾ ਜਾਂ ਕਹਾਣੀ | 5 |
| | | |
| | | |
| | ਕੁੱਲ ਨੰਬਰ | 40 |

| ✳ SEA -2 (ORAL EXAMS) | BLUE PRINT SEA - 2 | MARKS |
|---|------------------------------|--------------|
| ਪਾਠ 7 ਤੋਂ 9 ਤਕ ਦਾ ਪਠਨ-ਪਾਠਨ | ਪਾਠ-ਪਠਨ | 5 |
| ਕਵਿਤਾ ਪਾਠ (ਪਾਠ 8) | ਕਵਿਤਾ-ਪਾਠ | 5 |
| ਪਾਠ 7 ਅਤੇ 9 ਤਕ ਦੇ ਅੱਖੇ ਸ਼ਬਦ | ਅੱਖੇ ਸ਼ਬਦ | 5 |
| | ਪ੍ਰਜੈਕਟ ਵਰਕ | 5 |
| | ਕੁੱਲ ਨੰਬਰ | 20 |
| ✳ FINAL TERM EXAMS | | |
| | BLUE PRINT FINAL TERM | MARKS |
| ਅਣਡਿੱਠਾ ਪੈਰਾ | ਅਣਡਿੱਠਾ ਪੈਰਾ | 5 |
| ਪੰਜਾਬੀ ਪਾਠ ਪੁਸਤਕ -2 | ਸ਼ਬਦ -ਅਰਥ | 4 |
| ਪਾਠ 7 ਤੋਂ 13 ਤਕ ਅਭਿਆਸ ਸਹਿਤ | ਪ੍ਰਸ਼ਨ-ਉੱਤਰ | 8 |
| ਪੰਜਾਬੀ ਵਿਆਕਰਣ ਰੁਤਬਾ-2 | ਖਾਲੀ ਥਾਵਾਂ ਭਰੋ | 4 |
| ਸ਼ਬਦ ਬੋਧ ਦੀ ਪਰਿਭਾਸ਼ਾ ਅਤੇ ਭੇਦ | ਬਹੁ ਵਿਕਲਪੀ ਪ੍ਰਸ਼ਨ | 4 |
| ਵਾਕ ਬੋਧ ਦੀ ਪਰਿਭਾਸ਼ਾ ਅਤੇ ਭੇਦ | ਵਾਕਾਂ ਵਿੱਚ ਵਰਤੋ | 3 |
| | ਸ਼ਬਦ ਬੋਧ | 3 |
| | ਵਾਕ ਬੋਧ | 2 |
| | ਨਾਂਵ | 2 |
| ਲਿੰਗ ਬਦਲੇ- ਪੇਜ ਨੰ 38 ਅਤੇ ਅਭਿਆਸ | ਲਿੰਗ ਬਦਲੇ | 3 |
| ਵਚਨ ਬਦਲੇ-ਪੇਜ ਨੰ 42 (ਦੂਜੀ ਲਾਇਨ ਤੇ ਅਭਿਆਸ) | ਵਚਨ ਬਦਲੇ | 3 |
| ਵਿਰੋਧੀ ਸ਼ਬਦ ਪੇਜ ਨੰ 47 ਅਤੇ ਅਭਿਆਸ | ਵਿਰੋਧੀ ਸ਼ਬਦ | 3 |
| ਬਹੁਤੇ ਸ਼ਬਦਾਂ ਲਈ ਇੱਕ ਸ਼ਬਦ - 14-25 ਤਕ | ਅਸੁੱਧ-ਸੁੱਧ | 3 |
| ਅਸੁੱਧ-ਸੁੱਧ- ਪੇਜ ਨੰ 50 ਅਤੇ ਅਭਿਆਸ | ਬਹੁਤੇ ਸ਼ਬਦਾਂ ਲਈ ਇੱਕ ਸ਼ਬਦ | 2 |
| ਮਹੀਨਿਆਂ ਦੇ ਨਾਂ | ਮਹੀਨਿਆਂ ਦੇ ਨਾਂ | 6 |
| ਮੁਹਾਵਰੇ-11 ਤੋਂ 20 ਤਕ | ਲੇਖ ਰਚਨਾ | 10 |
| ਲੇਖ ਰਚਨਾ- ਮੇਰਾ ਮਿੱਤਰ, ਮੇਰ, ਦੀਵਾਲੀ | ਕਹਾਣੀ | 5 |
| ਕਹਾਣੀ- ਲਾਲਚੀ ਕੁੱਤਾ, ਲੁੰਬੜੀ ਤੇ ਕਾਂ | ਪੱਤਰ ਰਚਨਾ | 6 |
| ਪੱਤਰ ਰਚਨਾ- ਫੀਸ ਮਾਫੀ ਲਈ ਮੁਖਅਧਿਆਪਕਾ ਨੂੰ ਬੇਨਤੀ ਪੱਤਰ। | ਮੁਹਾਵਰੇ | 4 |
| ਵਡੇ ਭਰਾ ਦੇ ਵਿਆਹ ਤੇ ਛੁੱਟੀ ਲਈ ਮੁਖਅਧਿਆਪਕਾ ਨੂੰ ਬੇਨਤੀ ਪੱਤਰ। | | |
| | | |
| ਚਾਚਾ ਜੀ ਨੂੰ ਤੁਹਾਡੇ ਜਨਮਿਦਨ ਤੇ ਤੋਹਫਾ ਭੇਜਣ ਲਈ ਧੰਨਵਾਦ ਪੱਤਰ। | | |
| | ਕੁੱਲ ਨੰਬਰ | 80 |

GK & V EDUCATION SYLLABUS (2023-2024) Class-VII

❄ PERIODIC TEST -1 (UT)

| ❖ Value Education | BLUE PRINT UT -1 | MARKS |
|---|-------------------------|--------------|
| | Value Education | 5 |
| Qualities of a Total Quality person | G.k | 15 |
| Mission statement | 1.Fill ups | |
| Principle of High Five | M.C.Q | |
| Gratitude Journals | One word Questions | |
| Daily Gratitude-Journals activity of Family | Match it | |
| | Identification | |
| ❖ GK | | |
| Quiz Course (Quiz-1) | Puzzle | |
| Page Number (5-15) | | |
| | | |
| | Total | 20 |

❄ SEA -1

| ❖ Value Education | BLUE PRINT TERM - 1 | MARKS |
|---|-----------------------------|--------------|
| Duties of a Child at school | Viva | 5 |
| Mission Statement | | |
| Gratitude flower/ Wall | | |
| Activity sheet on My Strenth | Community Awareness project | 12 |
| Project Work | | |
| Gratitude Journal | Portfolio | |
| Project on Community Awareness | P.T.M Feed back | 3 |
| Work sheet on Skill of (Good listening) | | |
| | | |
| ❖ GK | | |
| Page number 16 to 25 | | |
| Portfolio | | |
| | Total | 20 |

FIRST TERM EXAM

| ❖ Value Education | Value Education | MARKS |
|---------------------------------|------------------------|--------------|
| Topics done in P.T-1and S.E.A-1 | G.k | 30 |
| Gratitude Tree (things) | 1.Fill ups | |
| ❖ GK | M.C.Q | |
| Page Number 26 to 40 | One word Questions | |
| Quiz Course (Quiz-2) | Match it/ | |
| | Identification | |
| | Puzzle | |
| | Total | 40 |

| ❁ PERIODIC TEST -2 (UT) | | |
|--|------------------------------------|--------------|
| ❖ Value Education | BLUE PRINT UT -2 | MARKS |
| Principles of High Five | Value Education | 5 |
| Method of learning | G.k | 15 |
| Duties of a child at Home | 1.Fill ups | |
| Gratitude ABC (Activity) School | M.C.Q | |
| | One word Questions | |
| ❖ GK | Match it/ | |
| Page Number-(41-to 50) | Identification | |
| Quiz Course (Quiz-3) | Puzzle | |
| | | |
| | Total | 20 |
| ❁ SEA -2 | | |
| ❖ Value Education | BLUE PRINT TERM - 2 | MARKS |
| Duties of a child at public place | Value Education | 5 |
| Gratitude Scavenger Hunt (Activity Sheet) | G.k | 15 |
| Project Work | 1.Fill ups | |
| Portfolio | M.C.Q | |
| 1.Gratitude journal | | |
| 2. Community Awareness Program Work sheet | One word Questions | |
| 3. Work sheet on Managing Anger | Match it/ | |
| ❖ GK | Identification | |
| Page Number-(51-55) | Puzzle | |
| Quiz Course 4 (Quiz 4) | | |
| | Total | 20 |
| | | |
| | | |
| FINAL TERM EXAM | BLUE PRINT: FINAL TERM EXAM | |
| ❖ Value Education | | |
| Topics done in P.T-2 and S.E.A- 2 | Value Education | 10 |
| A letter of Gratitude | | |
| Work sheet on (Asking Questions) | G.k | 30 |
| ❖ GK | 1.Fill ups | |
| Page Number-(51 to40) | M.C.Q | |
| | One word Questions | |
| Quiz Course (Quiz 5) | Match it/ Identification | |
| | Puzzle | |
| | Total | 40 |

COMPUTER SCIENCE SYLLABUS - Class VII

| | | |
|--|---------------------------|--------------|
| ☼ Project Work | | |
| Project will be made in school computer lab using HTML | BLUE PRINT | MARKS |
| | Project Work | 10 |
| ☼ First Term Exam | | |
| L-1 Computer Virus | BLUE PRINT I TERM | MARKS |
| L-4 HTML5 -Introduction | Fill ups | 4 |
| L-5 HTML Creating Web Pages | True/False | 4 |
| L-6 HTML5-Images,Links and Tables | MCQ's | 4 |
| | Q/Ans | 4 |
| | App.Base Q/Ans | 2 |
| | Practical Question | 2 |
| | Practical Skills | 20 |
| ☼ Project Work | | |
| Project will be made in school computer lab using phyton | BLUE PRINT | |
| | Project Work | 10 |
| ☼ Second Term Exam | | |
| L-2 GIMP Introduction | BLUE PRINT II TERM | MARKS |
| L-3 GIMP-Working With Layers | Fill ups | 4 |
| and Turtle | True/False | 4 |
| | MCQ's | 4 |
| | Q/Ans | 4 |
| | App.Base Q/Ans | 2 |
| | Practical Question | 2 |
| | Practical Skills | 20 |

Drawing Syllabus: Class VII

| Term - 1 | Term - 2 |
|---|---|
| <p>April -</p> <ul style="list-style-type: none"> *Drawing file work- geometrical shapes, object drawing fruits, still life. *Craft work- paper bag making, clay modelling. <p>May -</p> <ul style="list-style-type: none"> *Drawing file work-draw parts of face, eyes, nose, ears, lips, head. *Craft work-card, tiara, sash making on mother's Day. <p>June -</p> <ul style="list-style-type: none"> *Holidays homework- still life, parts of face. *Craft work-gift items on Father's Day. <p>July -</p> <ul style="list-style-type: none"> *Drawing file work-face study. *Craft work-banners on save/grow more trees, growing fruits/vegetables. <p>August*</p> <p>Drawing file work-portrait+project work making (puppet).</p> <ul style="list-style-type: none"> *Craft Work-tricolor buntings+badges. <p>September -</p> <ul style="list-style-type: none"> *Revision of 1st term syllabus. *Craft work-hindidiwasactivity+flower for teachers. <p style="text-align: center;">Unit Test -:</p> <ul style="list-style-type: none"> *Geometrical shapes, object drawing, fruits and still life. | <p>October -</p> <ul style="list-style-type: none"> *Drawing file work-scene of festivals and story board (flash card). *Craft work-charkha of Gandhi ji+Ravana. <p>November -</p> <ul style="list-style-type: none"> *Drawing file work-foliage study and trees. *Craft work-lanterns, wall decors. <p>December -</p> <ul style="list-style-type: none"> *Drawing file work-animals and birds. *Craft work-lanterns with Christmas trees+gifts. <p>January -</p> <ul style="list-style-type: none"> *Drawing file work-landscape and project work (paper collage). *Craft Work-tricolor kites. <p>February -</p> <ul style="list-style-type: none"> *Revision of 1st term syllabus. <p style="text-align: center;">Unit Test -:</p> <ul style="list-style-type: none"> *Festivals, trees, animals, landscape, foliage study. |

Music Syllabus: Class VII

| First Term | Second Term |
|---|---|
| <ul style="list-style-type: none">❖ Prayers<ul style="list-style-type: none">○ Saraswati Vandana○ Ae Malik Tere Bande Hum | <ul style="list-style-type: none">❖ Prayers<ul style="list-style-type: none">○ Jeevan Tumne Diya○ Teri Hai Zameen Tera Aasman |
| <ul style="list-style-type: none">❖ Mantra Chanting<ul style="list-style-type: none">○ Saraswati mantra○ Mul Mantra.. Ek Omkar | <ul style="list-style-type: none">❖ Mantra Chanting<ul style="list-style-type: none">○ Mul Mantra.... Ek Omkar○ Om Tryambkam Yajamahi |
| <ul style="list-style-type: none">❖ Songs<ul style="list-style-type: none">○ Madhuban Khushbu Deta Hai○ National Song 'Vande Mataram' | <ul style="list-style-type: none">❖ Songs<ul style="list-style-type: none">○ Suraj ki Garmi se○ Aa Chal ke Tujhe |
| <ul style="list-style-type: none">❖ Devotional Songs<ul style="list-style-type: none">○ Tu Sacha Sahib Mera○ Mera Aapki Kripa Se○ God is One○ Lab Par Aati Hai Dua | <ul style="list-style-type: none">❖ Devotional Songs<ul style="list-style-type: none">○ Apni Bani Mein Amrit Ghol○ Sanwli Surat Par○ God is One○ I Have Come To Thee |
| <ul style="list-style-type: none">❖ Dance<ul style="list-style-type: none">○ Basic Dance Steps○ Zumba Steps○ Basic Knowledge of Alankar | <ul style="list-style-type: none">❖ Dance<ul style="list-style-type: none">○ Punjabi Steps○ Aerobics Steps○ Basic Knowledge of Taal |
| <ul style="list-style-type: none">❖ Theme Based Cultural Activities Related to Baisakhi, Earth Day, Mother's Day, Independence Day, Janmashtami, Van Mahotsav etc. | <ul style="list-style-type: none">❖ Theme Based Cultural Activities Related to Dussehra, Diwali, Children's Day, GuruParv, Christmas, Republic Day, Family Unity Day |

Physical Education Syllabus: Class VII

| First Term | Second Term |
|--|---|
| <ul style="list-style-type: none">❖ Yoga<ul style="list-style-type: none">○ Om Chanting○ Meditation○ Yog Mudras | <ul style="list-style-type: none">❖ Yoga<ul style="list-style-type: none">○ Aradh chandrasana○ Padhastasana○ Garudasana |
| <ul style="list-style-type: none">❖ Races<ul style="list-style-type: none">○ 30 Meter Shuttle Race○ Throwing Events | <ul style="list-style-type: none">❖ Races<ul style="list-style-type: none">○ 100 meter Relay Race○ Skipping Race |
| <ul style="list-style-type: none">❖ Games<ul style="list-style-type: none">○ Basketball○ Netball○ Baseball | <ul style="list-style-type: none">❖ Games<ul style="list-style-type: none">○ Kho-kho○ Softball○ Kabaddi |
| <ul style="list-style-type: none">❖ Fitness Exercises<ul style="list-style-type: none">○ Warm Up Exercises○ General Exercises of Shoulder, Fingers and Hands | <ul style="list-style-type: none">❖ Fitness Exercises<ul style="list-style-type: none">○ Stretching○ General Exercises of Neck, Legs and Feet |
| <ul style="list-style-type: none">❖ Competitions<ul style="list-style-type: none">○ 30 m. Shuttle Race, Basketball, Yoga Competition | <ul style="list-style-type: none">❖ Competitions<ul style="list-style-type: none">○ Skipping Race, Kho-kho, Kabbadi, Fun Races on Sports Day |

Healthy and Balanced Diet Tiffin Schedule

For Summers

Monday :- Vegetable Millets/Vegetable Daliya/Vegetable Upma+ Curd+ Halwa+Any Seasonal Fruit

Tuesday:- Shahi Paneer/ Paneer Bhurji /Palak Paneer +Paratha /Chapati + Salad

Wednesday:- Gourd (ghiya)/ Pumpkin/ Bhindi+ Paratha/ Chapati+ Any Seasonal Fruit

Thursday:- Kadhi Chawal/ Besan Cheela/ Vegetable Pulao+Salad

Friday:- Udad daal/ Rajma/ Lobia+ Rice /Chapati +Any Seasonal Fruit

Saturday:- Black Chane/ White Chane +Rice /Chapati/ Paratha + Meeta Daliya +Salad

For Winters

Monday :- Vegetable Millets/Vegetable Daliya/Vegetable Upma+ Curd+ Halwa+Any Seasonal Fruit

Tuesday:- Shahi Paneer/ Paneer Bhurji /Palak Paneer +Paratha /Chapati + Salad

Wednesday:- Sarson ka Saag/ Aloo Methi/ + Makki ka Paratha/ Chapati+ Any Seasonal Fruit

Thursday:- Kadhi Chawal/ Besan Cheela/ Suji Cheela+ Besan Halwa+Salad

Friday:- Carrot/ Peas/ Capsicum Vegetable+ /Chapati +Any Seasonal Fruit

Saturday:- Black Chane/ White Chane + Rice/ Paratha/ Chapati +Meetha Daliya +Salad

On Special Occasions

Vegetable Idli/ Vegetable Sandwich/ Vegetable Cutlets/Vegetable Macroni/ Cheese Sandwich / Bread
Pakoda + Sweet Dish

LONG TEST SCHEDULE (2023- 24)

Class – III to VIII FIRST TERM

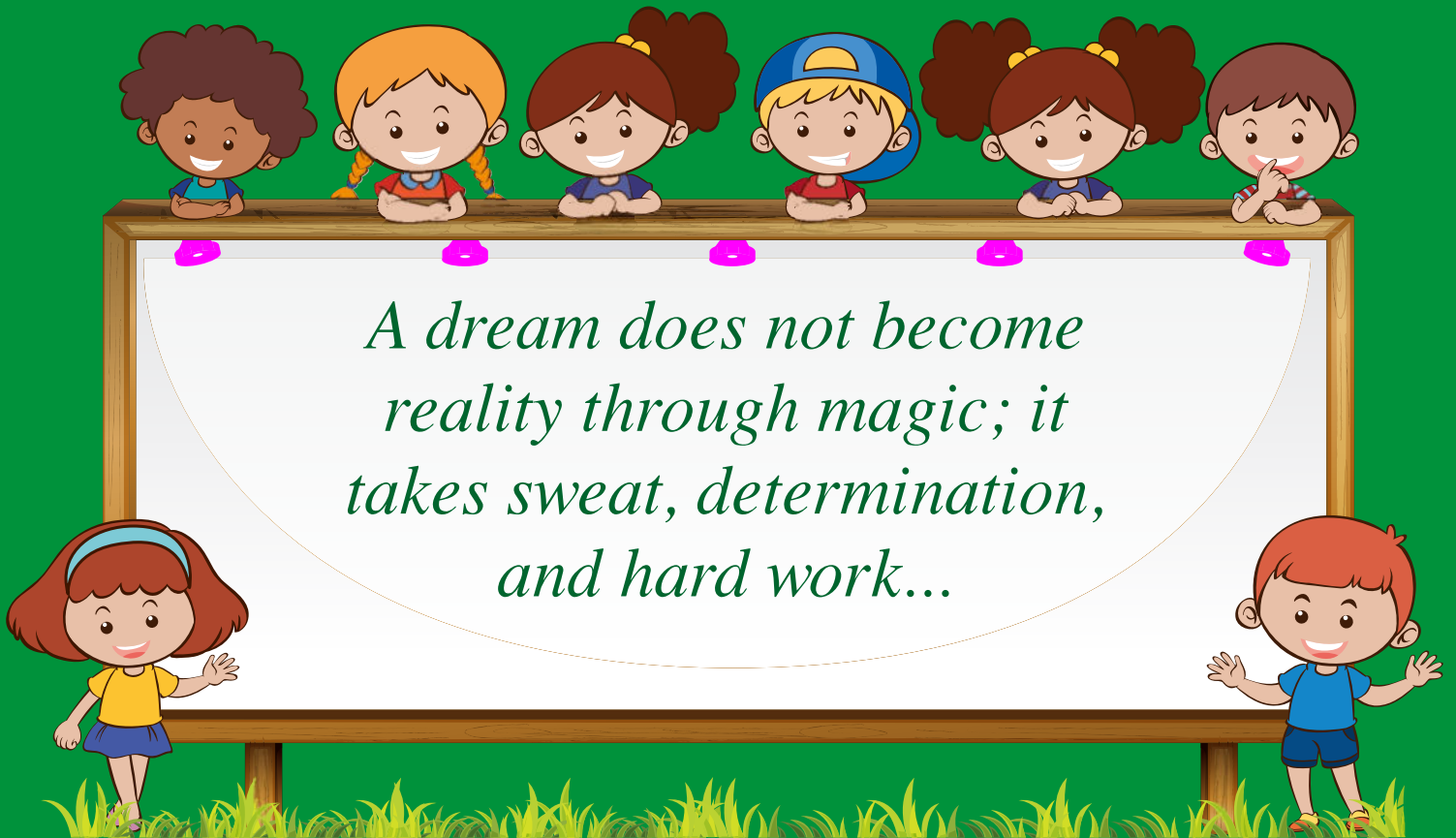
| Date | Day | III | IV | V | VI | VII | VIII |
|-------------|------------|------------|-----------|----------|------------|------------|-------------|
| 17/04/2023 | Monday | Hindi | Maths | English | Science | Social Sci | Hindi |
| 24/04/2023 | Monday | Maths | English | EVS | Social Sci | Hindi | Maths |
| 01/05/2023 | Monday | English | EVS | Hindi | Hindi | Maths | English |
| 08/05/2023 | Monday | EVS | Hindi | Maths | Maths | English | Science |
| 15/05/2023 | Monday | G.K. | G.K. | G.K. | English | Science | Social Sci |
| 17/07/2023 | Monday | Hindi | Maths | English | Science | Social Sci | Hindi |
| 24/07/2023 | Monday | Maths | English | EVS | Social Sci | Hindi | Punjabi |
| 07/08/2023 | Monday | English | EVS | Computer | Hindi | Maths | English |
| 14/08/2023 | Monday | EVS | Computer | Hindi | Maths | Punjabi | Science |
| 21/08/2023 | Monday | G.K. | Hindi | Maths | English | Science | Social Sci |
| 28/08/2023 | Monday | Computer | G.K. | G.K. | Punjabi | English | Maths |

SECOND TERM

| Date | Day | III | IV | V | VI | VII | VIII |
|-------------|------------|------------|-----------|----------|------------|------------|-------------|
| 23/10/2023 | Monday | Hindi | Maths | English | Science | Social Sci | Hindi |
| 30/10/2023 | Monday | Maths | English | EVS | Social Sci | Hindi | Maths |
| 06/11/2023 | Monday | English | EVS | Hindi | Hindi | Maths | English |
| 20/11/2023 | Monday | EVS | Hindi | Maths | Maths | English | Science |
| 04/12/2023 | Monday | G.K. | G.K. | G.K. | English | Science | Social Sci |
| 11/12/2023 | Monday | Hindi | Maths | English | Punjabi | Social Sci | Hindi |
| 22/01/2024 | Monday | Maths | English | EVS | Science | Punjabi | Maths |
| 29/01/2024 | Monday | English | EVS | Computer | Social Sci | Hindi | Punjabi |
| 05/02/2024 | Monday | EVS | Computer | Hindi | Hindi | Maths | English |
| 12/02/2024 | Monday | G.K. | Hindi | Maths | Maths | English | Science |
| 19/02/2024 | Monday | Computer | G.K. | G.K. | English | Science | Social Sci |

List of Holidays for Session -2023-24

| Date | Day | Holiday |
|--|-----------|--|
| 4-Apr-23 | Tuesday | Mahavir Jayanti * |
| 14-Apr-23 | Friday | Dr. B.R. Ambedkar Jayanti / Vaisakhi |
| 22-Apr-23 | Saturday | Parshuram Jayanti /Id -ul-Fitr |
| 5-May-22 | Friday | Budh Purnima * |
| 22-May-22 | Monday | Maharana Pratap Jayanti |
| 31-Jul-23 | Monday | Shaheed Udham Singh's Martyrdom Day |
| 15-Aug-23 | Tuesday | Independence day |
| 19-Aug-23 | Saturday | Haryali Teej |
| 30-Aug-23 | Wednesday | Raksha Bandhan |
| 6-Sep-23 | Wednesday | Janamastmi |
| 23-Sep-23 | Saturday | Shaheedi Divas/ Haryana War Heroes'Martyrdom Day |
| 2-Oct-23 | Monday | Mahatma Gandhi Jayanti |
| 15-Oct-23 | Sunday | Maharaja Agarsen Jayanti |
| 24-Oct-23 | Tuesday | Dussehra |
| 28-Oct-23 | Saturday | Maharishi Valmiki Jayanti |
| 1-Nov-23 | Wednesday | Haryana Day/ Karwa Chauth |
| 11-Nov-23 | Saturday | Pre- Diwali |
| 12-Nov-23 | Sunday | Diwali |
| 13-Nov-23 | Monday | Vishvakarma day/Goverdhan Puja |
| 14-Nov-23 | Tuesday | Bhai Dooj |
| 27-Nov-23 | Monday | Guru Nanak Dev Jayanti |
| 25-Dec-23 | Monday | Christmas |
| Year - (2024) | | |
| 17-Jan-24 | Wednesday | Guru Govind Singh B'Day |
| 26-Jan-24 | Friday | Republic Day |
| 14-Feb-24 | Wednesday | Basant Panchmi * |
| 24-Feb-24 | Saturday | Guru Ravidas Jayanti |
| 8-Mar-24 | Friday | MahaShivratri |
| 23-Mar-24 | Saturday | Shaheedi Diwas Bhagat Singh * |
| 25-Mar-24 | Monday | Holi |
| Note : | | |
| <input type="checkbox"/> Summer Break for students 1st June to 3rd July 2023 and reopen on 4th July 2023 | | |
| <input type="checkbox"/> Winter Break in January (according to government orders) | | |
| <input type="checkbox"/> Second Saturday of the month will be a holiday for students | | |
| <input type="checkbox"/> Last working day of the month will be a holiday for students | | |
| <input type="checkbox"/> Holidays/Dates may change according to the orders of the administration. | | |
| <input type="checkbox"/> The school will begin 1 hour late on Ashtami | | |
| <input type="checkbox"/> If 15th August / 26th January will be working day for celebration then the holiday will be on 16th August/ 27th January | | |



TULSI PUBLIC SEN. SEC. SCHOOL
(AFFILIATED TO CBSE)